

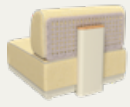


CRANK FURNITURE
THE IONIAN OUTDOOR COLLECTION

CRANK.

CONTENTS

OUTDOOR SOFA/DINING CHAIR



BLOCK
08-13



SHELL
14-19



STRING
20-35



BAGEL
36-49



JUMBO
50-59



PILLOW
60-69



CHIC
70-79



LOOP
80-87



OVAL
88-95



RUGBY
96-107



NEST
108-111



BANYAN TREE
112-121



FLOW
122-123



RIBBON
124-125

OUTDOOR DINING-TABLE/SIDE TABLE



MOONCAKE
128-129



BALANCE
130-137



BERGEN
138-139



LOTUS
140-145



PIPE BARCART
146-147

OUTDOOR FLOWERPOT



LOTUS PLANTER
150-155



ROOT PLANTER
156-157

OUTDOOR LAMPS



LANTERN
160-167

OUTDOOR CABINET



LOTUS OUTDOOR
FUNCTION ISLAND
170-175



ISLAND
176-181

OUTDOOR PAVILION



PAVILION
184-197

PRODUCT DETAILS

198-241

MATERIAL

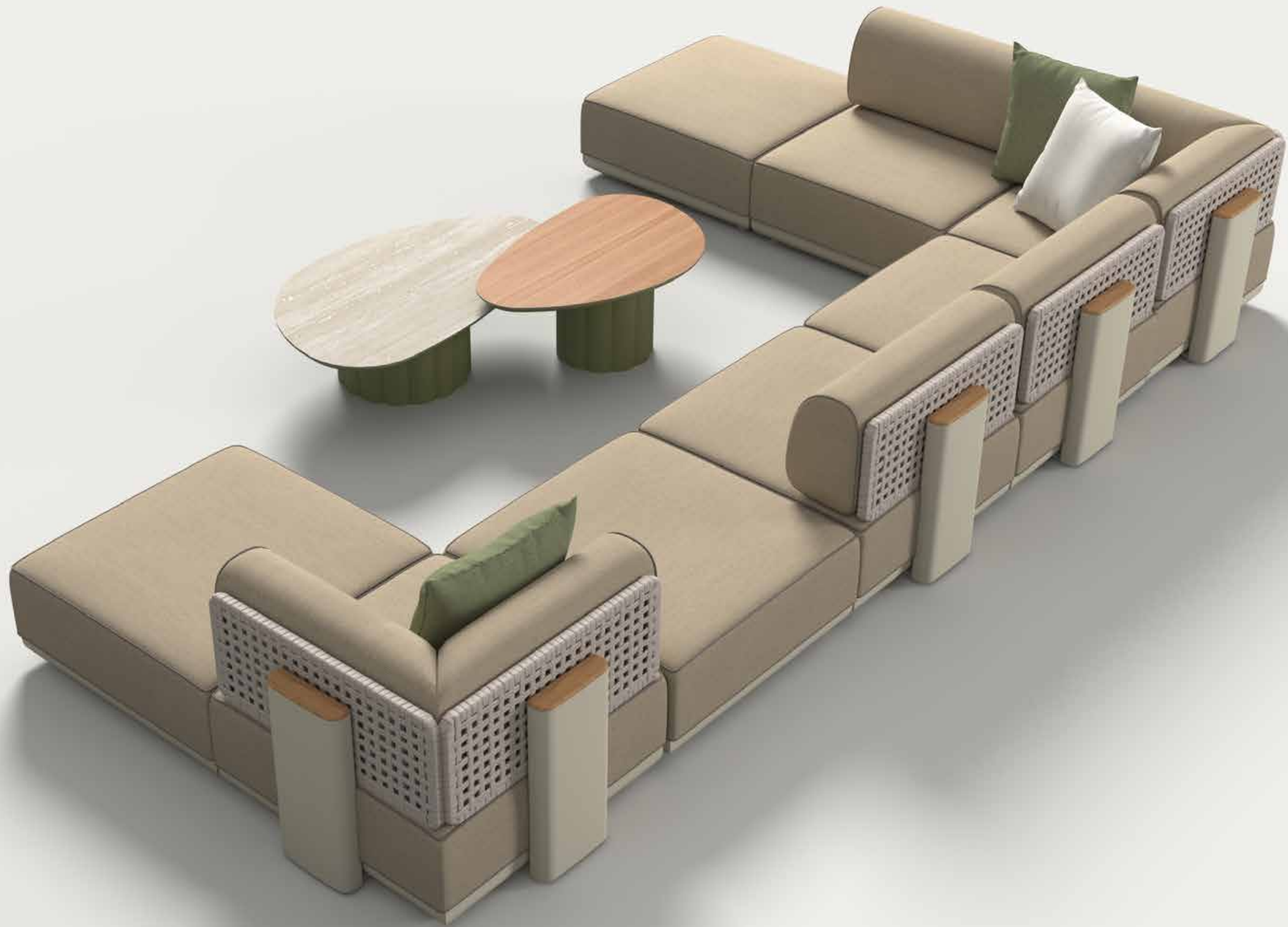
242-251

BLOCK new

Walking through various city blocks, enjoying the relaxation brought by the free exploration, the design concept of the Block Series just inspired by the 'city block'. The first impression of Block Sofa is thick, full, and comfortable.



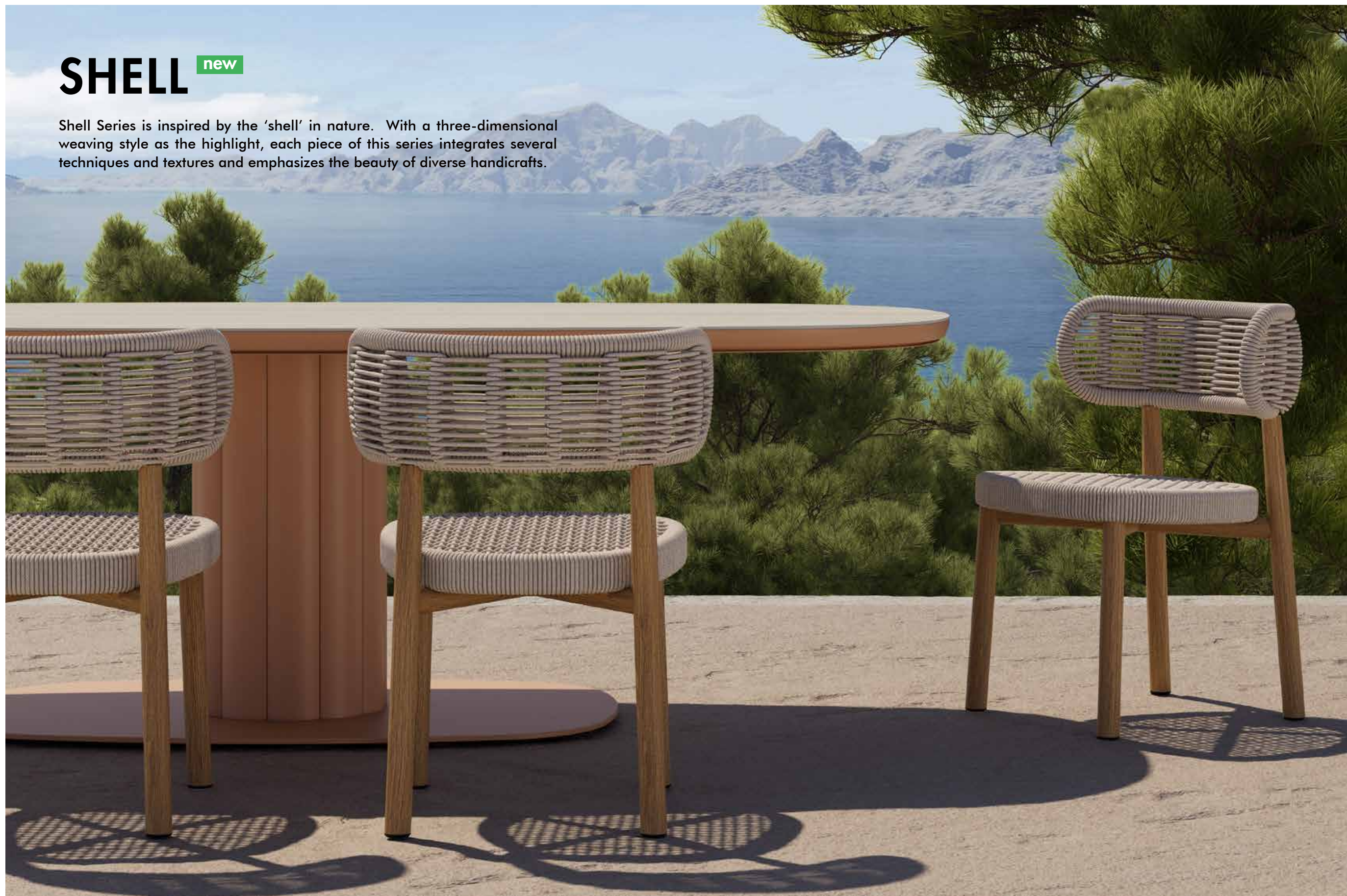




Block Sofa adopts a split structure that can ensure the stability of the module system. Based on the outdoor sponges, the seat cushion also adds a built-in spring structure to achieve better support and rebound effect.

SHELL new

Shell Series is inspired by the 'shell' in nature. With a three-dimensional weaving style as the highlight, each piece of this series integrates several techniques and textures and emphasizes the beauty of diverse handicrafts.



The backrest design uses KUNDESIGN's classic double-layer woven structure, with recognizable parallel lines, like the pattern on the shell, expressing rational geometric beauty. When seated, the shell-shaped backrest can provide good support with breathability. The seat surface chooses a more dense weaving style to ensure the supporting force. At the same time, the outstanding and quite artistic color design makes the different materials perfectly integrated.





Under the aesthetic of combining virtual and real, Shell Chair uses a simple aluminum frame with a fully woven backrest and seat to create a unique shape and comfortable experience.

STRING

Simple and pure, from lines into a plane, this is the design concept of String series. Each piece in this collection is completed with a suspended structure and a hand-weaving technique to create a classic, timeless impression.







24

25

LOTUS-DINING TABLE
(KT8602) Sandstone/Snow White Top

STRING-DINING ARMCHAIR & LOUNGE ARMCHAIR
(KC8608) Sandstone/ Sand







STRING-LOUNGE ARMCHAIR
(KC8608) Black Mat/ Carbon



STRING-DINING ARMCHAIR
(KC8608) Black Mat/ Carbon

LOTUS-DINING TABLE
(KT8602) Black Mat/Snow White Top



STRING-DINING ARMCHAIR
(KC8608) Black Mat/ Carbon

BAGEL-EXTENDABLE TABLE
(KT8602) Black Mat/Sharo Blue Top

STRING-LOUNGE ARMCHAIR;(KC8608) Black Mat/ Carbon
BALANCE-SIDE TABLE;(KT8508)Black Mat/Teak Top

34

35



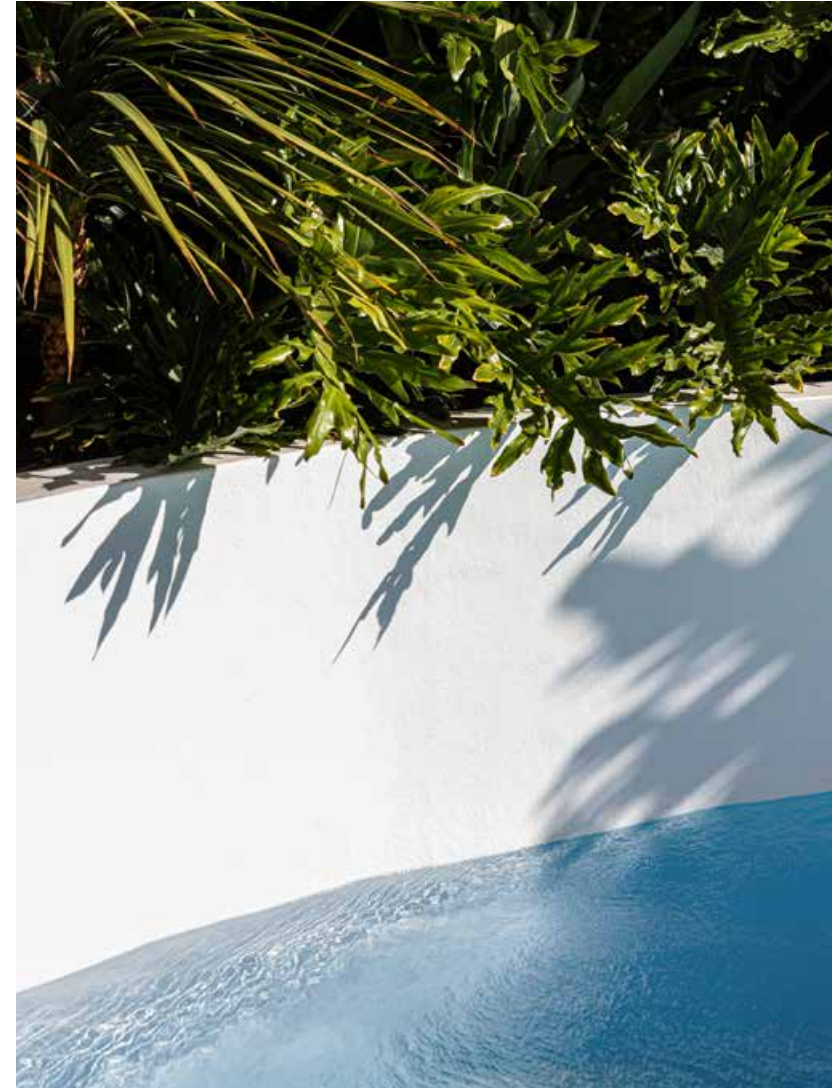
BAGEL

Bagel has inside and outside double design Which wrap your back comfortably with a fit body curve. Lounge chair, high-back lounge chair and dining chair are included in this series.

36

37









BAGEL - LOUNGE ARMCHAIR & 2-SEATER SOFA
(KC8605) Teaklook Alu/Sand;Cushion in Light Grey

BAGEL - HIGHBACK LOUNGE ARMCHAIR
(KC8605) Teaklook Alu/Black Mat;Cushion in Light Grey

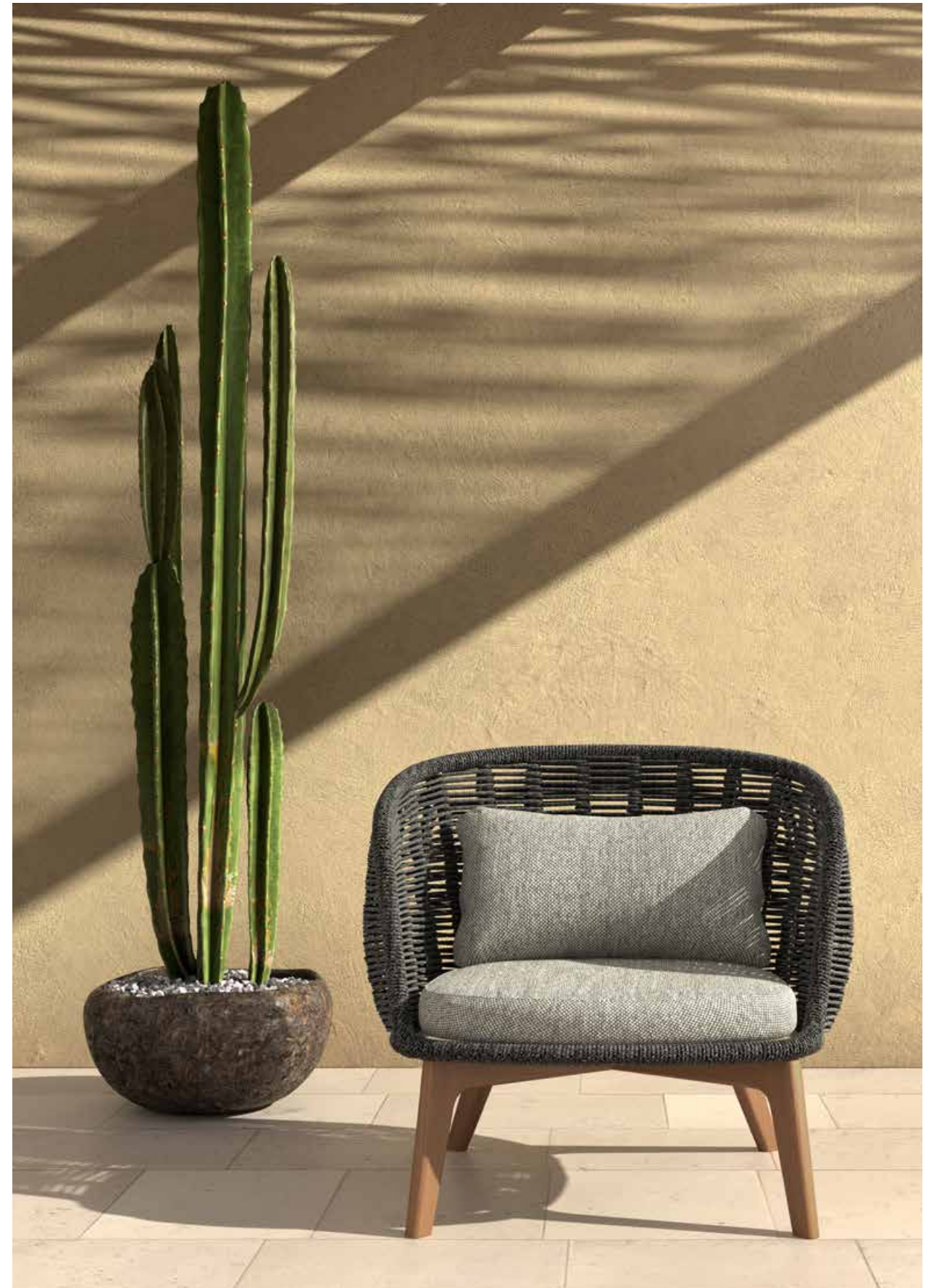
BAGEL-COFFEE TABLE
(KT8605) Teaklook Alu/Jenny Grey Top

BAGEL-SIDE TABLE
(KT8605) Teaklook Alu/Olive Grey



BAGEL -HIGHBACK LOUNGE ARMCHAIR & FOOTSTOOL
(KC8605) Teaklook Alu/Black Mat;Cushion in Light Grey

BAGEL-SIDE TABLE
(KT8605) Teaklook Alu/Olive Grey



BAGEL -LOUNGE ARMCHAIR
(KC8605) Teaklook Alu/Black Mat;Cushion in Sunproof-161



BAGEL -BAR CHAIR
(KC8605) Teaklook Alu/Black Mat;Cushion in Dark Grey

JUMBO

Jumbo series represents an unhurried contemporary attitude towards leisure life. It looks like a jumbo item with "elephant ears" from a distance.

50

51





Jumbo Lounge Armchair is wide with a handwoven backrest and wings, expressing a sense of embrace. The color of the wood and the combination of weaving make it very natural and harmonious.





JUMBO-LOUNGE ARMCHAIR & SOFA & DINING ARMCHAIR
(KC8607) Teaklook Alu/Sand; Cushion in Light Grey

BAGEL-SIDE TABLE
(KT8605) Teaklook Alu/Olive Grey TOP

BAGEL-COFFEE TABLE
(KT8605) Teaklook Alu/Jenny Grey Top

BAGEL-EXTENDABLE TABLE
(KT8602) Olive Grey/Jenny Grey Top

LANTERN-FLOOR LAMP(XL)
(KH8510) Olive

JUMBO-DINING ARMCHAIR
(KC8607) Teaklook Alu/Sand; Cushion in Light Grey

BAGEL-EXTENDABLE TABLE
(KT8602) Olive Grey/Jenny Grey Top



PILLOW

Pillow Sofa takes aluminum frame and teak board as the support part. The soft cushions on the top can be removed for easy cleaning and storage. In order to ensure the comfort and three-dimensional sense of the cushions, each cushion is equipped with a stainless-steel frame inside which can prevent deformation.









66

67

PILLOW -2-SEATER SOFA RIGHT ARM MODULE
(KC8804)Black Mat /Light Grey

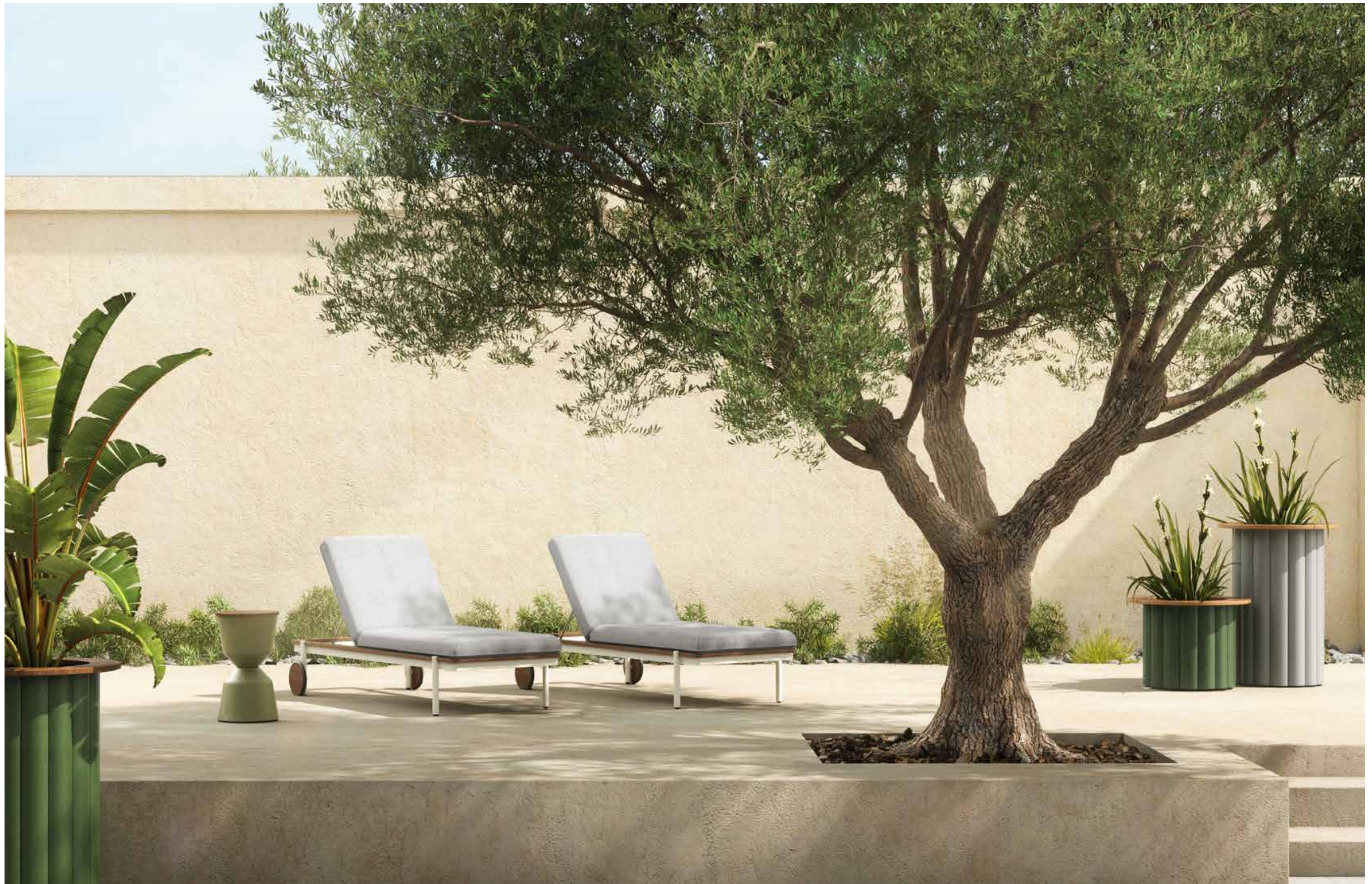
PILLOW -CHAISE LOUNGE LEFT ARM MODULE
(KS8804)Black Mat /Light Grey

PILLOW- COFFEE TABLE
(KT8804)Black Mat /Teak Top

PILLOW -SIDE TABLE
(KT8804)Black Mat/Teak Top

LOTUS-PLANTER
(KH8602) Juniper Green/Silver Grey

LANTERN-HAND LAMP
(KH8510)Black Mat/Olive



PILLOW -SUN LOUNGER
(KS8804)White Mat /Light Grey

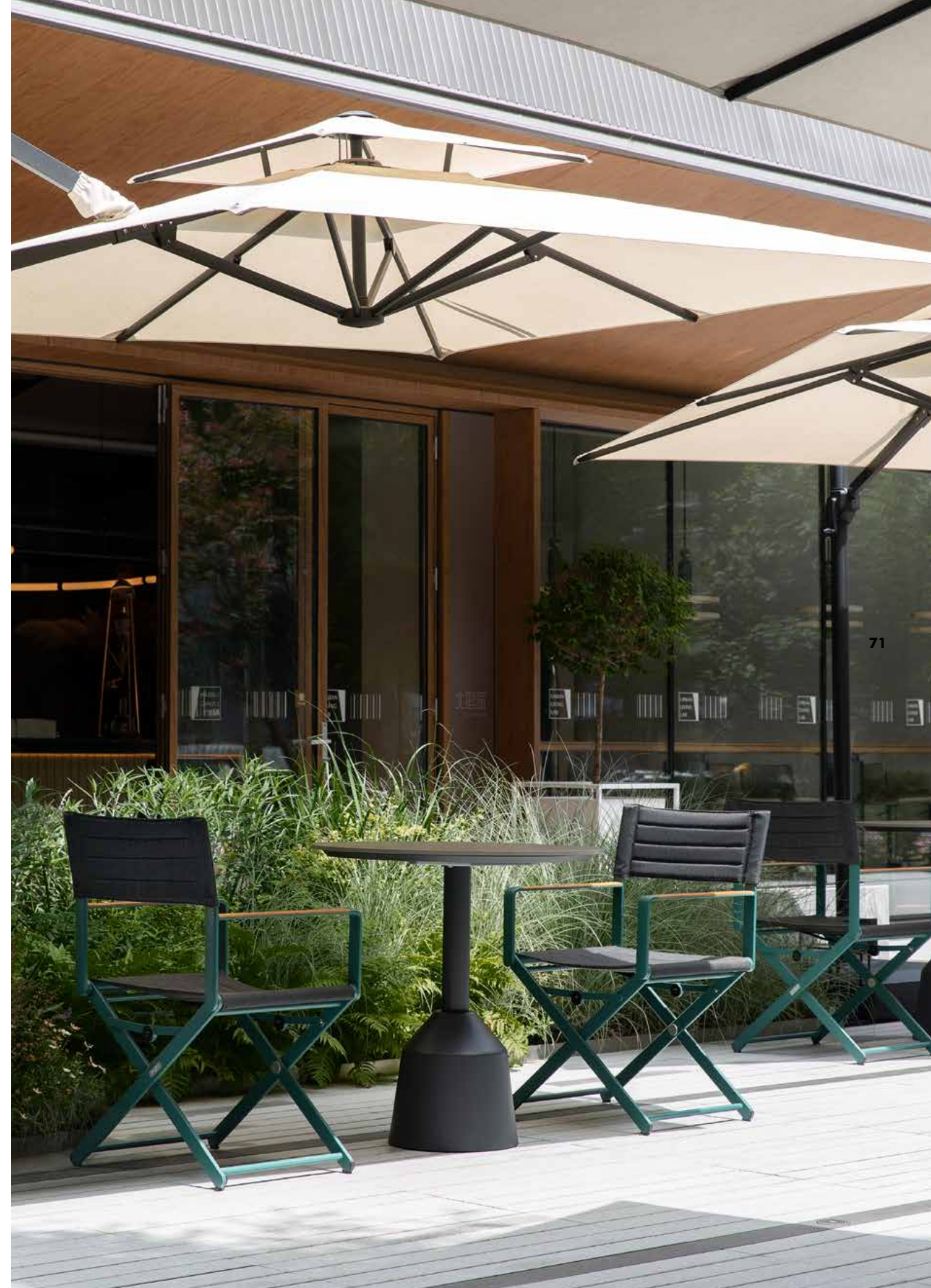
BALANCE-SIDE TABLE
(KT8508) Olive/Teak Top

CHIC

The birth of Chic Folding Chair is a tribute to the classic 'Director's Chair' in the 20th century. Its design inspiration can be traced back to the ancient Roman period.



70



71



1402



CHIC-FOLDING CHAIR; (AC5746) Sandstone/Sand
CHIC-FOLDING CHAIR; (AC5746) White Mat/Light Grey
BALANCE-DINING TABLE; (KT8602) Black Mat/Jenny Grey Top
LOTUS VASE; (KH8602) Orange/Olive

76



77

The birth of Chic Folding Chair is a tribute to the classic 'Director's Chair' in the 20th century. Its design inspiration can be traced back to the ancient Roman period.

Through modern technology, Chic Folding Chair has simplified and optimized the structure of the chair to the utmost extent. Each component is casted with fine details. Its sturdy chair body is composed of metal frame and hand-made three-dimensional sewing fabric, with the built-in quick-drying sponge on the back and seat surface, providing both aesthetic feeling and comfort.



LOOP

The LOOP chair was originally designed to express continuous lines. The entire chair is woven with a single continuous rope.



80

LOOP-DINING ARMCHAIR
(KC8604) Juniper Green/ Honey



81



LOOP-DINING ARMCHAIR
(KC8604) Black Mat/Carbon

BERGEN-DINING TABLE
(AT0608) Black Mat/Jenny Grey Top



LOOP-BAR CHAIR
(KC8604) Terra Cotta/ Apricot

BERGEN- BAR TABLE
(AT0608) Terra Cotta Top





OVAL

OVAL chair is our contemporary and three-dimensional take of the traditional board back chair. The edge stamping craft allows it to have a large and three-dimensional backrest - comfortable and compact.

88









LOTUS-DINING TABLE
(KT8602) Juniper Green/Jenny Grey Top

PIPE BAR CART
(KT8503) Olive Grey

OVAL-DINING ARMCHAIR
(KC8507) Olive

RUGBY

Rugby series expresses a blend of metal, wood and rope elements which is inspired by the sport of Rugby. The first impression of this series is steadfast, steady. And the elegant detail gives more levels of design expression.

96

97

RUGBY-CENTER MODULE & LOUNGE ARMCHAIR & 2-SEATER SOFA LEFT ARM MODULE
(KC8603) Black Mat/Dark Grey; Cushion in Dark Grey

RUGBY-COFFEE TABLE & END TABLE
(KT8603) Black Mat/Plastic Wood Top

LANTERN-FLOOR LAMP(XL)
(KH8510) Olive

LOTUS-PLANTER
(KH8602) Olive/ Anthracite



RUGBY-2-SEATER SOFA
(KC8603) Black Mat/Dark Grey; Cushion in Dark Grey

RUGBY-LOUNGE ARMCHAIR
(KC8603) Black Mat/Dark Grey; Cushion in Dark Grey

RUGBY-COFFEE TABLE
(KT8603) Black Mat/Plastic Wood Top

LOTUS-PLANTER
(KH8602) Olive/ Anthracite



RUGBY-2-SEATER SOFA LEFT ARM MODULE & RIGHT ARM MODULE
(KC8603) Black Mat/Dark Grey; Cushion in Dark Grey

RUGBY-COFFEE TABLE & END TABLE
(KT8603) Black Mat/Plastic Wood Top

RUGBY-CENTER MODULE & LOUNGE ARMCHAIR & CORNER MODULE
(KC8603) Black Mat/Dark Grey; Cushion in Dark Grey

LANTERN-FLOOR LAMP(XL)
(KH8510) Olive

LOTUS-PLANTER
(KH8602) Olive/ Anthracite



102

103

RUGBY-2-SEATER SOFA & LOUNGE ARMCHAIR
(KC8603) White Mat/ Light Grey; Cushion in Mandarina Vita-32

RUGBY-LOUNGE HEIGHT COFFEE TABLE
(KT8603) White Mat/Plastic Wood Top

PILLOW -SUN LOUNGER
(KS8804)White Mat /Cushion in Mandarina Vita-30

LOTUS-PLANTER
(KH8602) Black Mat

BALANCE-SIDE TABLE
(KT8508) Black Mat/ Teak

PIPE-BAR CART
(KT8503) Black Mat



104

RUGBY-2-SEATER SOFA & LOUNGE ARMCHAIR
(KC8603) White Mat/ Light Grey; Cushion in Mandarina Vita-32

PILLOW - SUN LOUNGER
(KS8804)White Mat /Cushion in Mandarina Vita-30



105



RUGBY-LOUNGE ARMCHAIR & SOFA
(KC8603) White Mat/Sand; Cushion in Sunberlla5476

RUGBY-LOUNGE HEIGHT COFFEE TABLE
(KT8603) White Mat/Plastic Wood Top

LOTUS-PLANTER
(KH8602) Juniper Green

PIPE BAR CART
(KT8503) Olive Grey

106

107

NEST

The geometric weavings of NEST high-back lounge chair mimic the appearance of rattan, creating a partition around the body for privacy. Crafted in weather-resistant ropes and quick-dry cushion, this chair is designed to be used both indoors and outdoors.



108



109

NEST-HIGHBACK LOUNGE ARMCHAIR & LOUNGE ARMCHAIR
(KC8602)Olive/Green; Cushion in Sand

Nest Sofa builds a round and fruity shape, and the waving design of its backrest shows a sense of order and geometric beauty, which changed the impression of traditional outdoor furniture. Nest Sofa is equipped with a tray on its armrest, the seat and backrest are made of special quick-dry and UV-resistant fabric with excellent environmental adaptability.



NEST-HIGHBACK LOUNGE ARMCHAIR & LOUNGE ARMCHAIR
(KC8602)Olive/Green; Cushion in Sand

LOTUS-SIDE TABLE
(KT8602)Silver Grey/Teak Top

LOTUS-CITY PLANTER
(KH8602)Olive Grey

BANYAN TREE

With a curvature that conforms to the natural arch of the human spine, the back of the Banyan Tree is designed to put the body at ease. The interwoven strands are reminiscent of tree vines to create a distinctive look that can easily complement its surroundings.

112



113

BANYAN TREE-LOUNGE ARMCHAIR & FOOTSTOOL
(KC8601) White Mat/Sand;Cushion in Light Grey

BAGEL-COFFEE TABLE
(KT8605) Olive Grey/Teaklook

BAGEL-SIDE TABLE
(KT8605) Olive Grey/Teaklook



BANYAN TREE-LOUNGE ARMCHAIR
(KC8601) White Mat/Sand;Cushion in Light Grey

PILLOW -2-SEATER SOFA RIGHT ARM MODULE & 2-SEATER SOFA LEFT ARM MODULE
(KC8804) White Mat /Cushion in Light Grey

PILLOW -CORNER MODULE
(KC8804) White Mat /Cushion in Light Grey

LOTUS-COFFEE TABLE
(KT8602) Juniper Green/Jenny Grey Top

LOTUS-SIDE TABLE
(KT8602) Silver Grey/Teak Top



116

117

BANYAN TREE-DINING ARMCHAIR
(KC8601) White Mat/Sand;Cushion in Light Grey

BAGEL-EXTENDABLE TABLE
(KT8602) Olive Grey/Jenny Grey Top



118

BANYAN TREE-ROCKING ARMCHAIR
(KC8601) White Mat/Sand;Cushion in Light Grey

BAGEL-SIDE TABLE
(KT8605) Olive Grey/Teaklook



119

BAGEL-SIDE TABLE
(KT8605) Olive Grey/Teaklook

BANYAN TREE-HIGHBACK LOUNGE ARMCHAIR & ROCKING ARMCHAIR & FOOTSTOOL
(KC8601) White Mat/Sand;Cushion in Light Grey



BANYAN TREE-ROCKING ARMCHAIR & FOOTSTOOL
(KC8601) Anthracite/Green; Cushion in Dark Grey

BALANCE-SIDE TABLE
(KT8508) Olive/Teak Top

LANTERN-FLOOR LAMP(L)
(KH8510) Black Mat

FLOW

Flow Swing is designed for leisure time to make the outdoor life full of fun. Its inspiration comes from the magic carpet in the myth story, trying to capture the happy time of childlike innocence through a special form. The swing is light, stable, and in a dynamic style. The seat has a slight arc shape, stretched with waterproof PVC fabric, can be used together with a soft cushion.



122

FLOW ; (KP8704)Dark Green/Cushion in Sunproof-161



FLOW ; (KP8704)Dark Green
RIBBONE-STOOL ;(KC8806) Sunproof-161
BERGENE-SIDE TABLE; (AT0608)Black Mat/Snow White

RIBBON

Ribbon Stool is an abstraction of natural things and simple manual-era life. It conveys a relaxed and beautiful emotion. Its round shape looks like vigorous seeds, leaves, plump succulent plants and grains. The banding design represents the easy 'hand tying' actions, such as bundling hay, tying a bouquet or a gift.



124



125

RIBBONE-STOOL; (KC8806)Vita30/Sunproof-161
BERGENE-SIDE TABLE; (AT0608)Black Mat/Snow White

MOONCAKE

Inspired by joyful holiday moments in life, the Mooncake stool is shaped like a traditional snack in the Mid-Autumn Festival, with continuous arc design and bright colors, presenting a light and cheerful playfulness.



128



129

MOONCAKE-STOOL
(KT8602)Olive/Orange

BALANCE

Be balanced, stable and back to the original state of things, which is the initial design concept of this Balance series. The word "Balance" is perfect to express the understanding of the scale, function and aesthetics of a table.

130

1402

CHIC-FOLDING CHAIR
(AC5746) Dark Green/Carbon

BALANCE-DINING TABLE
(KT8602) Black Mat/Jenny Grey Top



The lines on the weights are designed with respect to the golden ratio, thus the top and bottom components are firm and secure. The series of weights also have symmetrical upper and lower endtables, with the upper one removable to serve dual functions of storage and flower arrangement.

134



135



BALANCE-DINING TABLE
(KT8602) White Mat/Teak Top

BALANCE- PLANTER
(KT8508) Olive Grey

136



BALANCE-SIDE TABLE
(KT8508)Olive/Black Mat;Teak Top

137



BERGEN

Bergen table series includes side table, dining table, bar table etc., which is composed by the simple geometric elements and pillars. The radians and details express the smooth rounded characteristics.



RIBBONE-STOOL
(KC8806)Vita30/Sunproof-161

BERGEN-SIDE TABLE
(AT0608)Black Mat/Snow White Top



OVAL-DINING ARMCHAIR
(KC8507)Yellow/Olive

BERGEN-SIDE TABLE
(AT0608)Yellow/Olive; Snow White Top

LOTUS

Select from a range of nature-inspired colours that will allow the series, which includes both tables and vases, to easily integrate into various indoor and outdoor décor.

140



LOTUS-DINING TABLE
(KT8602) Sandstone/Snow White Top

STRING-DINING ARMCHAIR & LOUNGE ARMCHAIR
(KC8608) Sandstone/ Sand

RIBBONE-STOOL
(KC8806) Vita30/Sunproof-161

BALANCE-SIDE TABLE
(KT8508) Black Mat/Olive,Teak Top

LANTERN-HAND LAMP
(KH8510)Black Mat/Olive

141



The design inspiration of Lotus series comes from the extraction and expression of the shape of petals. The petal design of its central pillar bestows the Lotus with understated elegance.



142



143



144

145

LOTUS-SIDE TABLE
(KT8602) Juniper Green/Jenny Grey Top

BANYAN TREE-DINING ARMCHAIR
(KC8601) White Mat/Sand;Cushion in Light Grey

PIPE BARCART

Derived from the PIPE double deck coffee table, the bar cart has been designed in full consideration of its usage and movement. It has a stable structure that is easily maneuvered around. Minimalistic and modern, the design of the PIPE bar cart can be well integrated into the outdoor environment

146

147



PIPE BAR CART
(KT8503) Olive Grey

LOTUS PLANTER

The Lotus planter continues to express the family character of the series, with the central column shaped like a petal and a continuous combination of one petal to another.



150

LOTUS-PLANTER
(KH8602) Olive/ Asphalt Grey/ Olive Grey/Orange/Juniper Green/Silver Grey



151

The overall flowerpot upper matches the rhythmic base of the petals below, achieving a more aesthetically pleasing ratio.

152

153

LOTUS-PLANTER
(KH8602) Olive/ Asphalt Grey/ Olive Grey/Orange/Juniper Green

LOTUS-SIDE TABLE
(KT8602) Silver Grey/Teak Top



LOTUS-PLANTER
(KH8602) Olive/ Asphalt Grey/ Olive Grey



This series is more suitable for home use with four reasonable sizes to meet your different plant needs.



ROOT-PLANTER
(KH8513) Olive/ Black Mat/Taupe

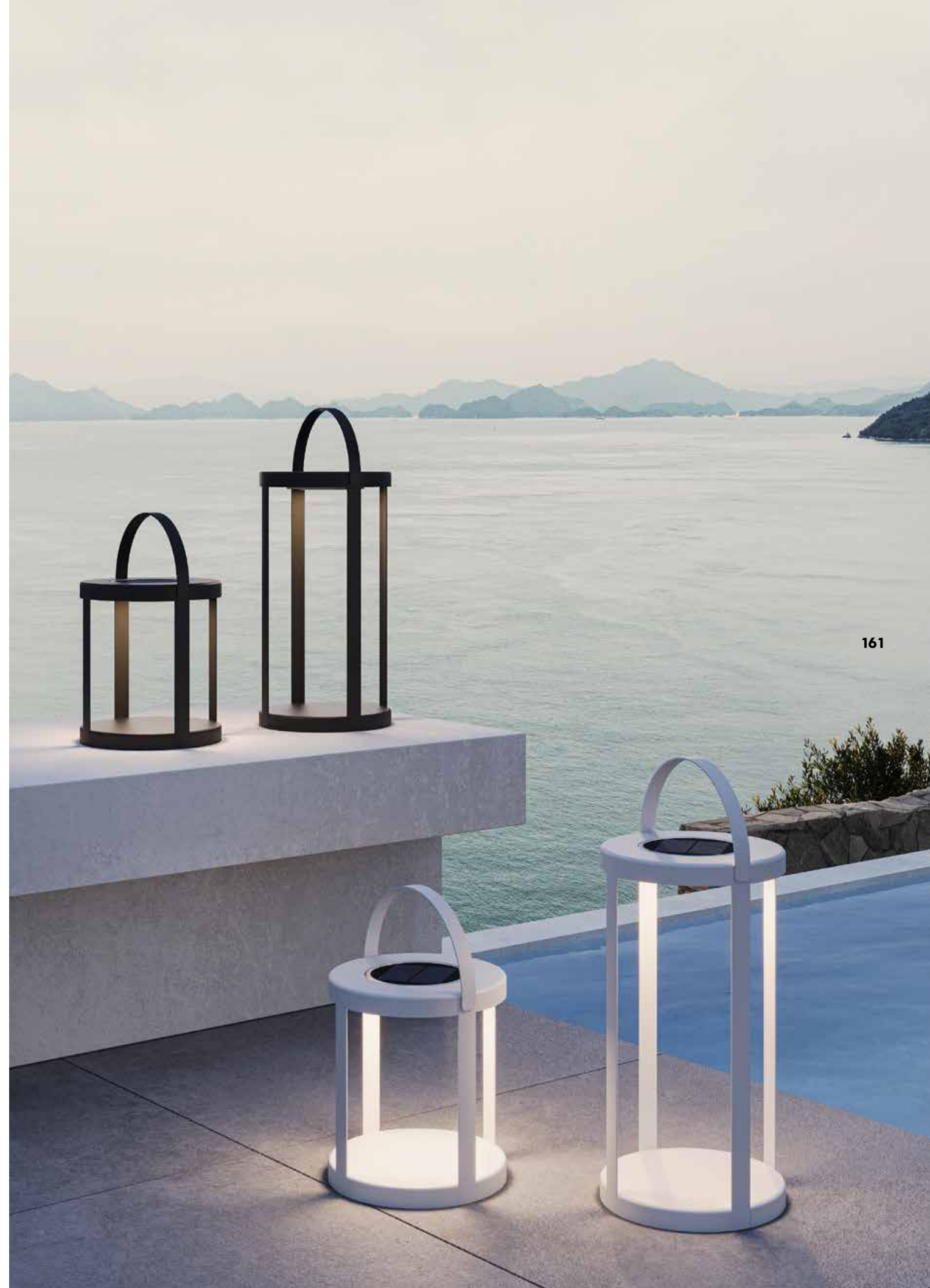
ROOT PLANTER

LANTERN

The inspiration of Lantern series comes from the combination of oriental aesthetics and modern design.



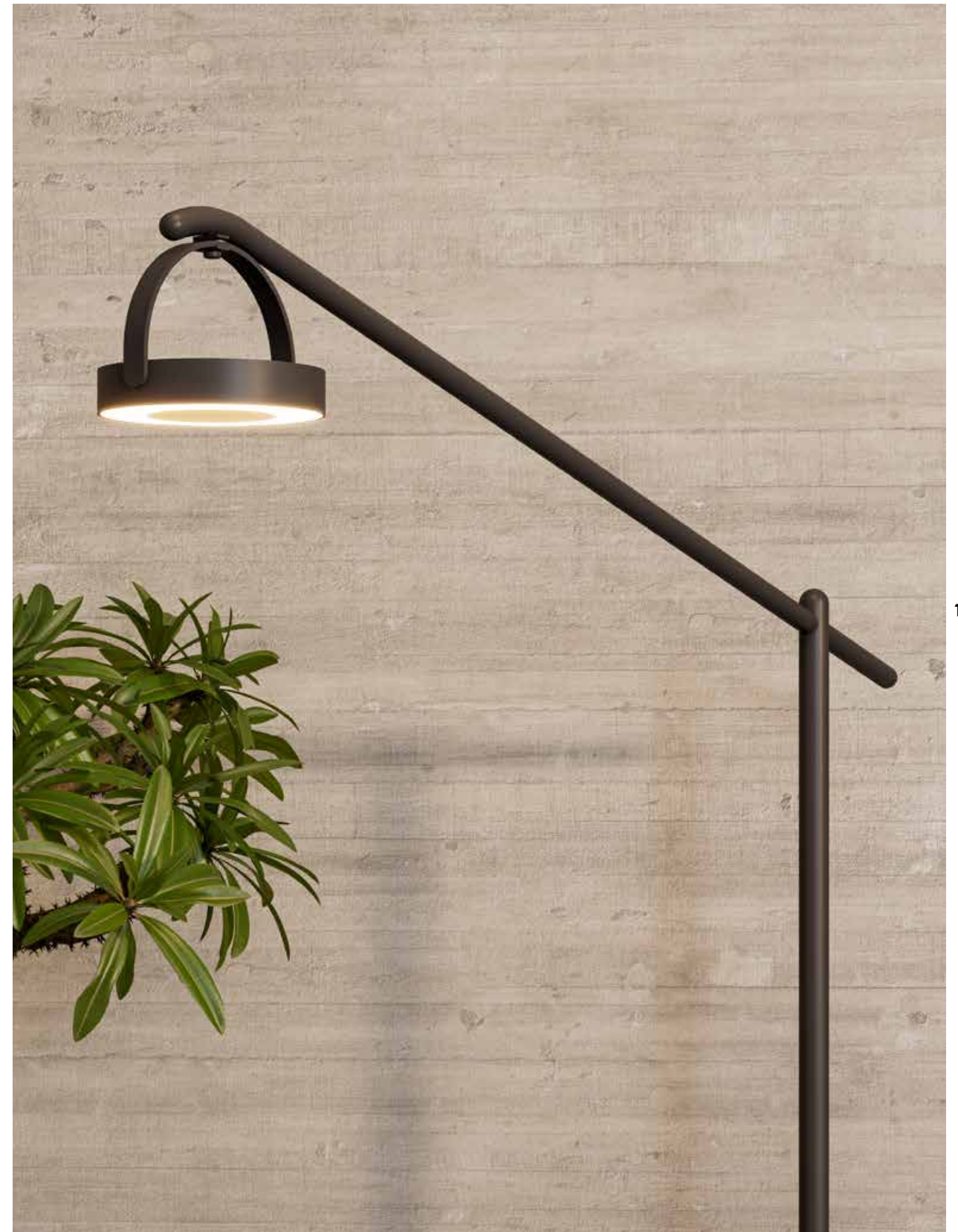
160



161



162



163

LANTERN-FLOOR LAMP(L)
(KH8510) Olive

MARRAKECH- 3-SEATER SOFA
(AC5879) White Mat;Light Grey

LANTERN-FLOOR LAMP(XL)
(KH8510) Black Mat



164

LANTERN-HAND LAMP
(KH8510) Orange/Olive/Olive Grey/Black Mat



165

For this hand lamp, it adds a small round bottom, which you can display plant, flower, decoration pieces to build the cozy atmosphere, delightfully fresh nature.

The light source uses solar energy + touch-control technology for flexible using and energy saving in practical daily life. For this floor lamp, you can choose upright stand or offset stand.



166



167

LANTERN-HAND LAMP
(KH8510) Olive Grey

LANTERN-FLOOR LAMP(XL)
(KH8510) Orange

VATICAN-LOUNGE ARMCHAIR
(AC5881) Terra Cotta ; Light Grey

LOTUS OUTDOOR FUNCTION ISLAND







ISLAND

176



177





180

181



PAVILION

Pavilion is designed to naturally extend indoor life to the outdoors with an architectural style. It is a 'continuation of the house', emphasizing a non-temporality, and encouraging normalization of enjoying the outdoors. The entire pavilion is based on a standard module structure with a narrow eaves design.



184

185

IBIZA-COFFEE TABLE
(AT5396) Teaklook Alu/Jenny Grey Top

CHIC-FOLDING CHAIR
(AC5746) Dark Green/Carbon

BALANCE-DINING TABLE
(KT8602) Black Mat/Jenny Grey Top

PAVILION
(AP6201) Black Mat

JUMBO-LOUNGE ARMCHAIR & 2-SEATER SOFA
(KC8607) Teaklook Alu/Dark Grey; Cushion in Fontelina 180

RIBBON-STOOL
(KC8806) Sunproof-161





190

191

PAVILION
(AP6201)Olive

LOTUS-DINING TABLE
(KT8602) Juniper Green/Jenny Grey Top

LOTUS-PLANTER
(KH8602) Juniper Green/Teaklook

PILLOW- COFFEE TABLE
(KT8804)White Mat /Teaklook

PILLOW-CENTER MODULE & 2-SEATER SOFA RIGHT ARM MODULE
(KC8804)White Mat /Cushion in Fontelina180

PILLOW-CHAISE LOUNGE LEFT ARM MODULE
(KS8804)White Mat /Cushion in Fontelina180





194

195



BLOCK

Walking through various city blocks, enjoying the relaxation brought by the free exploration, the design concept of the Block Series just inspired by the 'city block'. The first impression of Block Sofa is thick, full, and comfortable. It can bring complete relaxation for the body and mind, like a long-awaited urban roaming, which is desirable. It uses a square block as the basic element to extend a single position, corner position, arc module, etc., which can match a flexible seating scene. Block Sofa adopts a split structure that can ensure the stability of the module system. Based on the outdoor sponges, the seat cushion also adds a built-in spring structure to achieve better support and rebound effect. While the T-shaped backrest with handwoven elements can be installed on any three sides of the base, and the special fixed way at the bottom makes it stand directly on the ground, like road signs and street guideposts, to express the characteristics of different cities: dark red and wooden color remind the memory of Beijing, light yellow and beige represent the romance of Paris. In addition, the exquisite teak decoration, woven pattern, and functional damp-proof foot emphasize the sense of integrity of this collection.

Comner Module
KC8609N13ROP
W92xD92xH73 cm
Aluminum/PVC rope/fabric



Frame : Sand
Rope : Sand
Fabric : VITA 19

Center Module
KC8609N07ROP
W85xD92xH73 cm
Aluminum/PVC rope/fabric



Frame : Sand
Rope : Sand
Fabric : VITA 19

Footstool
KC8609N25TEX
W85xD85xH40 cm
Aluminum/fabric



Frame : Sand
Fabric : VITA 19

FRAME:



Sand
(70108)

ROPE:



Sand
(HF-006)

FABRIC:



VITA 19

SHELL

Shell Series is inspired by the 'shell' in nature. With a three-dimensional weaving style as the highlight, each piece of this series integrates several techniques and textures and emphasizes the beauty of diverse handicrafts. Under the aesthetic of combining virtual and real, Shell Chair uses a simple aluminum frame with a fully woven backrest and seat to create a unique shape and comfortable experience. The backrest design uses KUNDESIGN's classic double-layer woven structure, with recognizable parallel lines, like the pattern on the shell, expressing rational geometric beauty. When seated, the shell-shaped backrest can provide good support with breathability. The seat surface chooses a more dense weaving style to ensure the supporting force. At the same time, the outstanding and quite artistic color design makes the different materials perfectly integrated.

Dining Armchair
KC8610N01ROP
W56xD56xH76 cm
Aluminum/PVC rope



Frame : Teaklook
Rope : Sand

Bar Chair
KC8610N17ROP
W56xD56xH97 cm
Aluminum/PVC rope



Frame : Black Mat
Rope : Carbon

FRAME:



Black Mat
(13569A)



Teaklook

ROPE:



Carbon
(HF-009)



Sand
(HF-006)

STRING

Simple and pure, from lines into a plane, this is the design concept of String series. Each piece in this collection is completed with a suspended structure and a hand-weaving technique to create a classic, timeless impression. The high-resilience PVC ropes like the countless strings are tightly arranged in one go, bringing a wrapped sitting experience. Three frames of carbon black, rice white, clay color are unified with the color of ropes, giving the chair a delicate texture.

Dining Armchair
KC8608N01ROP
W51xD58.5xH83.5 cm
Aluminum/PVC rope



Frame : Black Mat
Rope : Carbon



Frame : Sandstone
Rope : Sand

Lounge chair
KC8608N07ROP
W70.5xD81xH81.5 cm
Aluminum/PVC rope



Frame : Black Mat
Rope : Carbon



Frame : Sandstone
Rope : Sand

Footstool
KC8608N25ROP
W51xD58.5xH83.5 cm
Aluminum/PVC rope



Frame : Midnight blue
Rope : Navy blue



Frame : Sandstone
Rope : Sand

FRAME:



Black Mat
(13569A)



Sandstone
(48381H)



Midnight blue
(1219623)

ROPE:



Carbon
(HF-009)



Sand
(HF-006)



Navy blue
(HF-008)

BAGEL

To make human beings more compatible with nature, Kun balances wood with hand knitting. Bagel collection featured of teak-base, tightly woven rope, soft cushions and comfortable back cushion. Bagel has inside and outside double design Which wrap your back comfortably with a fit body curve. Lounge chair, high-back lounge chair and dining chair are included in this series. A higher quality aluminum base could also be customized for dining chair in a lower price.

Dining Armchair (ALU base)
KC8605B04ROP
W63.5xD62xH79.5 cm
Aluminum/PVC rope



Frame : Teaklook
Rope : Light Grey
Fabric : Leaf



Frame : Teaklook
Rope : Sand
Fabric : Orange

Lounge Armchair
KC8605B10ROP
W85.5xD79.5xH79.5 cm
Aluminum/PVC rope



Frame : Teaklook
Rope : Light Grey
Fabric : Leaf



Frame : Teaklook
Rope : Sand
Fabric : Orange

Highback Lounge Armchair
KC8605B121ROP
W88xD86xH114.5 cm
Aluminum/PVC rope



Frame : Teaklook
Rope : Light Grey
Fabric : Leaf



Frame : Teaklook
Rope : Sand
Fabric : Orange

2-Seater Sofa
KC8605B11ROP
W182xD90xH79.5 cm
Aluminum/PVC rope



Frame : Teaklook
Rope : Light Grey
Fabric : Leaf



Frame : Teaklook
Rope : Sand
Fabric : Orange

Footstool
 KC8605B25ROP
 W72xD57xH31.5 (43) cm
 Aluminum/PVC rope



Frame : Teaklook
 Rope : Light Grey
 Fabric : Leaf



Frame : Teaklook
 Rope : Sand
 Fabric : Orange

Coffee Table
 KT8605B63CER
 W120xD65xH34 cm
 Aluminum/Ceramic top



Frame : Teaklook
 Top : Jenny Grey

Coffee Table
 KT8605B63ALU
 Φ65x33 cm
 Aluminum



Frame : Teaklook
 Top : Olive Grey

Side Table
 KT8605B64ALU
 Φ52x45 cm
 Aluminum



Frame : Teaklook
 Top : Olive Grey

Dining Table
 KT8602D27CER
 Φ140x76cm
 Φ90x76cm
 Aluminum/Ceramic



Frame : Teaklook
 Top : Jenny Grey

Dining Table
 KT8602D27CER
 KT8602D27TEX
 Φ90x76cm
 Aluminum/Ceramic/Teak



Frame : White Mat
 Top : Teak



Frame : Teaklook
 Top : Jenny Grey

Dining Table
 KT8602D27CER
 W160xD90xH76cm
 W220xD100xH76cm
 Aluminum/Ceramic



Frame : Olive
 Top : Jenny Grey



Frame : Olive Grey
 Top : Jenny Grey



Frame : Black Mat
 Top : Calacata Gold

Extendable Table
 KT8602D28CER
 W220(280)xD100xH76cm
 Aluminum/Ceramic



Frame : Olive
 Top : Jenny Grey



Frame : Olive Grey
 Top : Jenny Grey

FRAME:



Black Mat
 (13569A)



Anthracite
 (72412)



Olive Grey
 (1215966)



White Mat
 (1200371)



Olive
 (1219626)



Teaklook

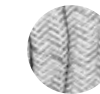
ROPE:



Dark Grey
 (HF-010)



Sand
 (HF-006)



Light Grey
 (44219)

FABRIC:



Leaf
 (SEF4004)



Orange
 (SEF4007)



Dark Grey
 (SEF4006)



Sand
 (SEF4008)



Light Grey
 (SEF4002)

TOP:



Sharo Blue



Jenny Grey



Calacata Gold



Teak

JUMBO

Jumbo series represents an unhurried contemporary attitude towards leisure life. It looks like a jumbo item with “elephant ears” from a distance. Jumbo Lounge Armchair is wide with a handwoven backrest and wings, expressing a sense of embrace. The color of the wood and the combination of weaving make it very natural and harmonious. The thick seat and comfortable cushions can let a person rest on it all afternoon. The whole series includes a lounge armchair, a 3-seater sofa, footstool and dining chair.

Dining Armchair
KC8607N04ROP
W63xD60.5xH79.5 cm
Aluminum/PVC Rope



Frame : Teaklook
Rope : Dark Grey
Fabric : Dark Grey



Frame : Teaklook
Rope : Sand
Fabric : Light Grey

Lounge Armchair
KC8607N10ROP
W91xD90.5xH81.5 cm
Aluminum/PVC Rope



Frame : Teaklook
Rope : Dark Grey
Fabric : Dark Grey



Frame : Teaklook
Rope : Sand
Fabric : Light Grey

Highback Lounge Armchair
KC8607N121ROP
W104.5xD95xH107 cm
Aluminum/PVC Rope



Frame : Teaklook
Rope : Dark Grey
Fabric : Dark Grey



Frame : Teaklook
Rope : Sand
Fabric : Light Grey

2-Seater Sofa
KC8607N11ROP
W165.5xD90.5xH81.5 cm
Aluminum/PVC Rope



Frame : Teaklook
Rope : Dark Grey
Fabric : Dark Grey



Frame : Teaklook
Rope : Sand
Fabric : Light Grey

3-Seater Sofa
KC8607N12ROP
W236xD90.5xH81.5 cm
Aluminum/PVC Rope



Frame : Teaklook
Rope : Dark Grey
Fabric : Dark Grey



Frame : Teaklook
Rope : Sand
Fabric : Light Grey

Footstool
KC8607N25TEX
W72xD55xH42 cm
Aluminum



Frame : Teaklook
Fabric : Dark Grey



Frame : Teaklook
Fabric : Light Grey

Coffee Table
KT8605B63CER
W120xD65xH34 cm
Aluminum/Ceramic top



Frame : Teaklook
Top : Jenny Grey

FRAME:



Teaklook

ROPE:



Dark Grey
(HF-010)



Sand
(HF-006)

FABRIC:



Dark Grey
(SEF4006)



Light Grey
(SEF4002)



Fontelina 180



Sand
(SEF4008)

PILLOW

The PILLOW is the result of Kun's exploration for the possibility of outdoor upholstery. Continuous adjustments were made during the development process to find the current structural proportion that merges functionality with streamlined aesthetics. The back and armrest cushions of the collection resemble soft pillows - just like the collection name - whose coverings can be removed for easy cleaning. Wrapped with KunDesign Tex, a material with remarkable durability and resistance to outdoor conditions, the quick-drying cushions are designed to be placed outside. Seated on a teak or bamboo base frame to create a textual contrast, which are FSC certified in consideration of the environment. With versatile modular components, the Pillow sofa is suitable for all interior and exterior settings.

Single Sofa
KC8804B10TEX
W114.5xD94xH82.5 cm
Aluminum/Teaklook ALU
Knocked-Down



Frame : White Mat
Fabric : Fontelina 180



Frame : Black Mat
Fabric : Marengo



Corner Module
KC8804B13TEX
W94xD94xH82.5 cm
Aluminum/Teaklook ALU
Knocked-Down



Frame : White Mat
Fabric : Fontelina 180



Frame : Black Mat
Fabric : Marengo



Center Module
KC8804B07TEX
W83.5xD94xH82.5 cm
Aluminum/Teaklook ALU
Knocked-Down



Frame : White Mat
Fabric : Fontelina 180



Frame : Black Mat
Fabric : Marengo



2-Seater Module
KC8804B08TEX
W165.5 xD94xH82.5 cm
Aluminum/Teaklook ALU
Knocked-Down



Frame : White Mat
Fabric : Fontelina 180



Frame : Black Mat
Fabric : Marengo



Chaise Lounge Left Arm Module
KS8804B88TEX
W184.5xD98xH82.5 cm
Aluminum/Teaklook ALU
Knocked-Down



Frame : White Mat
Fabric : Fontelina 180



Frame : Black Mat
Fabric : Marengo



2-Seater Sofa Right Arm Module
KC8804B86TEX
W181xD94xH82.5 cm
Aluminum/Teaklook ALU
Knocked-Down



Frame : White Mat
Fabric : Fontelina 180



Frame : Black Mat
Fabric : Marengo



2-Seater Sofa
KC8804B11TEX
W197.5xD94xH82.5 cm
Aluminum/Teaklook ALU
Knocked-Down



Frame : White Mat
Fabric : Fontelina 180



Frame : Black Mat
Fabric : Marengo



Sun Lounger
KS8804A59TEX
W202xD75.5xH33 cm
Aluminum/Teaklook ALU



Frame : White Mat
Fabric : Fontelina 180



Frame : Black Mat
Fabric : Marengo

Footstool
KC8804B25TEX
W95.5xD90.5xH42 cm
Aluminum/Teaklook ALU



Frame : White Mat
Fabric : Fontelina 180



Frame : Black Mat
Fabric : Marengo

Coffee Table
 KT8804A23ALU
 KT8804A23CER
 W125xD76.5xH26 cm
 Aluminum/Teak/Ceramic



Frame : White Mat
 Top : Teaklook



Frame : Olive
 Top : Snow White

Side Table
 KT8804A24ALU
 W87xD50xH23 cm
 Aluminum/Teaklook ALU



Frame : White Mat
 Top : Teaklook

FRAME:



Black Mat
 (13569A)



White Mat
 (1200371)



Olive
 (1219626)

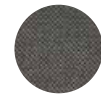


Teaklook

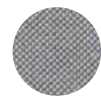
FABRIC:



Marengo
 (Vita53)



VITA 17



VITA GRIS 51



Fontelina 180

TOP:



Snow White



Set-1

2-Seater Sofa Right Arm Module (KC8804B86TEX)
 Chaise Lounge Left Arm Module (KS8804B88TEX)
 2-Seater Sofa (KC8804B11TEX)
 Coffee Table (KT8804A23ALU)
 Side Table (KT8804A24ALU)
 Footstool(KC8804B25TEX)



Set-2

2-Seater Sofa Right Arm Module (KC8804B86TEX)
 2-Seater Sofa Left Arm Module (KC8804B85TEX)
 Corner Module (KC8804B13TEX)
 Coffee Table (KT8804A23ALU)



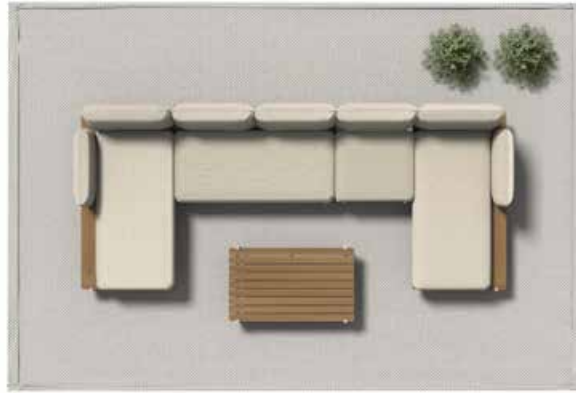
Set-3

2-Seater Sofa (KC8804B11TEX)
 Single Sofa (KC8804B10TEX)
 Coffee Table (KT8804A23ALU)



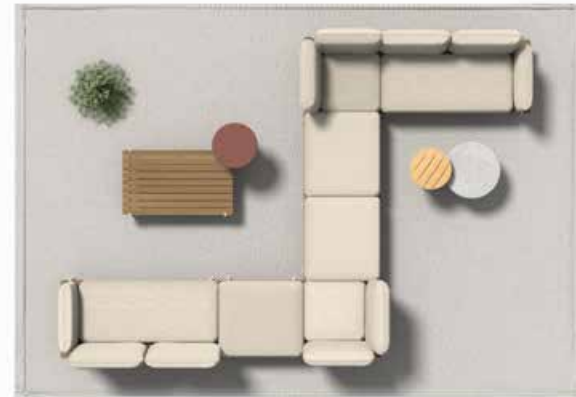
Set-4

2-Seater Sofa Right Arm Module (KC8804B86TEX)
 Chaise Lounge Left Arm Module (KS8804B88TEX)
 Coffee Table (KT8804A23ALU)



Set-5

Chaise Lounge Left Arm Module (KS8804B88TEX)
 Chaise Lounge Right Arm Module (KS8804B89TEX)
 2-Seater Module(KC8804B08TEX)
 Center Module(KC8804B07TEX)
 Coffee Table (KT8804A23ALU)



Set-6

2-Seater Sofa Left Arm Module (KC8804B85TEX)
 Corner Module (KC8804B13TEX)
 Footstool(KC8804B25TEX)
 Side Table (KT8605B64ALU)
 Side Table (KT8602N64TEK)
 Coffee Table(KT8602N63CER)
 Coffee Table (KT8804A23ALU)

CHIC

Chic folding chair was born to pay tribute to the classic Director's Chair in 20th century, and its design inspiration can be traced back to the earliest. In ancient Rome. Through modern technology, Chic folding chair has simplified and optimized the chair structure to the maximum extent, and every part is integrated. Body casting, reinterpreting standardization from excellent details. Its firm chair body consists of metal frame and hand-sewn three-dimensional sewing fabric. Quick-drying sponge is built into backrest and seat surface, which has both aesthetic feeling and sitting comfort. In daily use, Chic folding chair is easy to store, showing quality and weight. And can be applied to various scenes.

Folding chair
 AC5746A55TEX
 W58*D52.5*H88 cm
 Aluminum/Sling/Teak



Frame : Sandstone
 Sling : Sand



Frame : White Mat
 Sling : Light Grey



Frame : Dark Green
 Sling : Carbon

Folding chair
 AC5746B55TEX
 W58*D52.5*H88cm
 Aluminum/Sling



Frame : Sandstone
 Sling : Sand



Frame : White Mat
 Sling : Light Grey



Frame : Dark Green
 Sling : Carbon

FRAME:



Sandstone
 (48381H)



Dark Green
 (4666HA)



White Mat
 (1200371)

SLING:



Carbon
 (T2155)



Light Grey
 (50567)



Sand
 (YLSJ006)

LOOP

The LOOP chair was originally designed to express continuous lines. The entire chair is woven with a single continuous rope. In order to ensure continuity and product quality, the back and the seat of the chair were proportionally divided into four parts, which not only boosts the appearance, but also increases the product lifespan. Soft as well as responsive, the chair provides a comfortable seating experience without the need of a cushion. Additionally, the wear-resisting and strong PVC simplifies the cleaning processing - use a soft brush to give it a fresh new look.

Dining Armchair
KC8604N04ROP
W58.5xD61.5xH81 cm
2.5cm Rope
Aluminum/PVC rope



Frame : Juniper Green
Rope : Honey



Frame : Sandstone
Rope : Sand



Frame : Black Mat
Rope : Carbon



Frame : Terra Cotta
Rope : Honey

Lounge chair
KC8604A07ROP
W69.5xD67xH77.5 cm
2.5cm Rope
Aluminum/PVC rope



Frame : Juniper Green
Rope : Honey



Frame : Sandstone
Rope : Sand



Frame : Black Mat
Rope : Carbon



Frame : Terra Cotta
Rope : Honey

Bar chair
KC8604N17ROP
W55xD48.5xH91 cm
2.5cm Rope
Aluminum/PVC rope



Frame : Juniper Green
Rope : Honey



Frame : Sandstone
Rope : Sand



Frame : Black Mat
Rope : Carbon



Frame : Terra Cotta
Rope : Honey

FRAME:



Black Mat
(13569A)



Juniper Green
(14940A)



Terra Cotta
(14797A)



Sandstone
(48381H)

ROPE:



CARBON
(HF-009)



Light Grey
(44219)



Honey
(HF-021)

OVAL

OVAL chair is our contemporary and three-dimensional take of the traditional board back chair. The edge stamping craft allows it to have a large and three-dimensional backrest - comfortable and compact. The legs have plump lines that give off a powerful presence when placed in open space. We use wooden finish on the aluminum seat surface to make it more durable and easier to maintain while retaining the warm visual sense of wood.

Dining Armchair
KC8507N04ALU
W61xD56xH85 cm
Aluminum



Frame : Olive



Frame : Black Mat



Frame : Sandstone

Lounge Armchair
KC8507N10ALU
W74xD66xH80 cm
Aluminum



Frame : Olive



Frame : Black Mat



Frame : Sandstone

FRAME:



Black Mat
(13569A)



Olive
(1219626)



Sandstone
(48381H)

RUGBY

An interactive conversation between metal, wood, and fabric resulted in the design of the RUGBY series. The upholstery's plump shape is relieved by spindle shaped-legs, so the resulting structure takes on a refreshing rather than chunky appearance. The armrests have a width and height that match the body's natural arm placement, and also serve as partition from the cold metal frame. Constructed with comfortable materials that are weather-resistant, the collection can be used in all spaces, both outdoors and indoors. With quality and weather proof teak wood set on aluminum legs, the lounge coffee table is designed to complement the contemporary lifestyle. It is deliberately set at a height that allows the table to be used not just for a singular purpose, but as a versatile and multifunctional product in your home.

Center Module
KC8603N07ROP
W79.5xD87xH77 cm
Aluminum/PVC rope/Plastic wood



Frame : Black Mat
Rope: Dark Grey
Fabric : Dark Grey



Frame : White Mat
Rope: Sand
Fabric : Sand

Lounge Armchair
KC8603N10ROP
W87xD92xH77 cm
Aluminum/PVC rope/Plastic wood



Frame : Black Mat
Rope: Dark Grey
Fabric : Dark Grey



Frame : White Mat
Rope: Sand
Fabric : Sand

Corner Module
KC8603N13ROP
W86xD86xH77 cm
Aluminum/PVC rope/Plastic wood



Frame : Black Mat
Rope: Dark Grey
Fabric : Dark Grey



Frame : White Mat
Rope: Sand
Fabric : Sand

2-Seater Sofa Right Arm Module
KC8603N86ROP
W166xD95xH77 cm
Aluminum/PVC rope/Plastic wood



Frame : Black Mat
Rope: Dark Grey
Fabric : Dark Grey



Frame : White Mat
Rope: Sand
Fabric : Sand

2-Seater Sofa Left Arm Module
KC8603N85ROP
W166xD95xH77 cm
Aluminum/PVC rope/Plastic wood



Frame : Black Mat
Rope: Dark Grey
Fabric : Dark Grey



Frame : White Mat
Rope: Sand
Fabric : Sand

2-Seater Sofa
KC8603N11ROP
W171xD95xH77 cm
Aluminum/PVC rope/Plastic wood



Frame : Black Mat
Rope: Dark Grey
Fabric : Dark Grey



Frame : White Mat
Rope: Sand
Fabric : Sand

Lounge Height Coffee Table
KT8603N23NTK
W160xD80xH66 cm
Aluminum/Plastic wood



Frame : Black Mat
Top : Plastic wood

Coffee Table
KT8603A23NTK
W130xD72.5xH33 cm
Aluminum/Plastic wood



Frame : Black Mat
Top : Plastic wood

End Table
KT8603N24NTK
W72.5xD72.5xH28 cm
Aluminum/Plastic wood



Frame : Black Mat
Top : Plastic wood



Set-1
 2-Seater Sofa Left Arm Module (KC8603N85ROP)
 2-Seater Sofa Right Arm Module (KC8603N86ROP)
 Corner Module (KC8603N13ROP)
 End Table (KT8603N24NTK)



Set-2
 2-Seater Sofa Left Arm Module (KC8603N85ROP)
 2-Seater Sofa Right Arm Module (KC8603N86ROP)
 Lounge Armchair (KC8603N10ROP)
 Center Module (KC8603N07ROP)
 Corner Module (KC8603N13ROP)
 Coffee Table (KT8603A23NTK)



Set-3
 2-Seater Sofa (KC8603N11ROP)
 Lounge Armchair (KC8603N10ROP)
 Coffee Table (KT8603A23NTK)



Set-4
 2-Seater Sofa Left Arm Module (KC8603N85ROP)
 Corner Module (KC8603N13ROP)
 Center Module (KC8603N07ROP)
 Coffee Table (KT8603A23NTK)
 End Table (KT8603N24NTK)



Set-5
 2-Seater Sofa Left Arm Module (KC8603N85ROP)
 2-Seater Sofa Right Arm Module (KC8603N86ROP)
 Center Module (KC8603N07ROP)
 Corner Module (KC8603N13ROP)
 Lounge Armchair (KC8603N10ROP)
 Coffee Table (KT8603A23NTK)
 End Table (KT8603N24NTK)

FRAME:



Black Mat
(13569A)



White Mat
(1200371)

FABRIC:



Dark Grey
(SEF4006)



Sand
(SEF4008)

ROPE:



Dark Grey
(HF-010)



Sand
(HF-006)

TOP:



Plastic Wood

NEST

The geometric weavings of the NEST collection mimic the appearance of rattan, giving the series a tropical look. On the highback lounge chair, the weavings create a partition around the body for privacy. Crafted in weather-resistant ropes and quick-dry cushion, the sofa is suitable for both indoor and outdoor use.

Dining Armchair
KC8602N04ROP
W57xD56xH81 cm
Aluminum/PVC rope



Frame : Black Mat
Rope : Dark Grey
Fabric : Dark Grey



Frame : Olive
Rope : Green
Fabric : Sand

Lounge Armchair
KC8602C10ROP
W73xD79xH74 cm
Aluminum/PVC rope



Frame : Black Mat
Rope : Dark Grey
Fabric : Dark Grey



Frame : Olive
Rope : Green
Fabric : Sand

Highback Lounge Armchair
KC8602A10ROP
W97.5xD91xH112 cm
Aluminum/PVC rope



Frame : Black Mat
Rope : Dark Grey
Fabric : Dark Grey



Frame : Olive
Rope : Green
Fabric : Sand



Frame : Curcum
Rope : Sand
Fabric : Leaf

FRAME:



Black Mat
(13569A)



Olive
(1219626)



Curcum
(1216034)

FABRIC:



Dark Grey
(SEF4006)



Sand
(SEF4008)



Leaf
(SEF4004)

ROPE:



Dark Grey
(HF-010)



Sand
(HF-006)



Green
(HF-008)

BANYAN TREE

With a curvature that conforms to the natural arch of the human spine, the back of the Banyan Tree is designed to put the body at ease. The interwoven strands are reminiscent of tree vines to create a distinctive look that can easily complement its surroundings. Weaved in weather-resistant and easy-to-clean Kundesign Rope, the Banyan Tree is a versatile series that can be placed in small living spaces, both indoors and outdoors.

Dining Armchair
KC8601N04ROP
W59xD59.5xH80.5 cm
Aluminum/PVC rope



Frame : Anthracite
Rope : Green
Fabric : Dark Grey



Frame : White Mat
Rope : Sand
Fabric : Light Grey

Lounge Armchair
KC8601N10ROP
W80xD77xH90 cm
Aluminum/PVC rope



Frame : Anthracite
Rope : Green
Fabric : Dark Grey



Frame : White Mat
Rope : Sand
Fabric : Light Grey

Highback Lounge Armchair
KC8601A10ROP
W80xD92xH113 cm
Aluminum/PVC rope



Frame : Anthracite
Rope : Green
Fabric : Dark Grey



Frame : White Mat
Rope : Sand
Fabric : Light Grey

Highback Lounge Armchair
KC8601B10ROP
W78xD89xH107 cm
Aluminum/PVC rope



Frame : Anthracite
Rope : Green
Fabric : Dark Grey



Frame : White Mat
Rope : Sand
Fabric : Light Grey

Rocking Armchair
KC8601N90ROP
W80xD92xH113 cm
Aluminum/PVC rope



Frame : Anthracite
Rope : Green
Fabric : Dark Grey



Frame : White Mat
Rope : Sand
Fabric : Light Grey

Rocking Armchair
KC8601B90ROP
W85xD91xH107 cm
Aluminum/PVC rope



Frame : Anthracite
Rope : Green
Fabric : Dark Grey



Frame : White Mat
Rope : Sand
Fabric : Light Grey

2-Seater Sofa
KC8601N11ROP
W167xD82xH90 cm
Aluminum/PVC rope



Frame : Anthracite
Rope : Green
Fabric : Dark Grey



Frame : White Mat
Rope : Sand
Fabric : Light Grey

Footstool
KC8601N25ROP
W68xD50xH38 cm
Aluminum/PVC rope



Frame : Anthracite
Rope : Green
Fabric : Dark Grey



Frame : White Mat
Rope : Sand
Fabric : Light Grey

FRAME:
Anthracite
(72412)



White Mat
(1200371)



ROPE:
Sand
(HF-006)



Green
(HF-008)



FABRIC:
Dark Grey
(SEF4006)



Light Grey
(SEF4002)



FLOW

Flow Swing is designed for leisure time to make the outdoor life full of fun. Its inspiration comes from the magic carpet in the myth story, trying to capture the happy time of childlike innocence through a special form. The swing is light, stable, and in a dynamic style. The seat has a slight arc shape, stretched with waterproof PVC fabric, can be used together with a soft cushion. Its handrails on both sides add teak elements for a natural touch. LED lights are hidden inside the canopy to provide light for reading or at night. In structural design, the stainless steel rockers can present a stable and smooth swaying effect. The swing also uses a smart flat packaging design which is more convenient for transportation and installation.

Flow Swing
KP8704N56TEX
W155xD165xH200 cm
Aluminium



Frame : Dark Green
Fabric : Sunproof-161



Frame : Magmatic red
Fabric : Orange



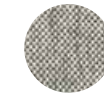
FRAME:
Black Mat
(13569A)



Magmatic red
(PE7001)



FABRIC:
Sunproof-161



Orange
(DCF0120001)



RIBBON

Ribbon Stool is an abstraction of natural things and simple manual-era life. It conveys a relaxed and beautiful emotion. Its round shape looks like vigorous seeds, leaves, plump succulent plants and grains. The banding design represents the easy 'hand tying' actions, such as bundling hay, tying a bouquet or a gift. Ribbon Stool has a multi-layer design with removable surface cover for easy cleaning and replacement, waterproof liner, and bottom counterweight for excellent outdoor performance. The stylish color and a variety of sizes make it flexible. This Stool can be used with dining tables, sofas or as combination furnishing of commercial space.

Stool
KC8806N14FAB
W44xD44x45 cm



Fraric : Leaf



Fraric : Light Grey

Stool
KC8806N14FAB
W66xD47x39 cm

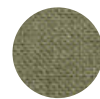


Fraric : Leaf



Fraric : Light Grey

FABRIC:



Vita30



Light Grey
(SEF4002)

MOONCAKE

Inspired by joyful holiday moments in life, the Mooncake stool is shaped like a traditional snack in the Mid-Autumn Festival, with continuous arc design and bright colors, presenting a light and cheerful playfulness. This all-aluminum stool is waterproof, easy to clean and maintain. It is suitable as an item to decorate the courtyard or indoor space. It can also be used as a side table to create a vibrant atmosphere.

Stool
KT8602F64ALU
Φ43.5x40 cm
Aluminium
Knocked-Down



Frame : Olive



Frame : Orange



FRAME:



Olive
(1219626)



Orange
(1219624)

BALANCE

A return to the basics was the central theme at the start of our weight table design process. Weights are used as mass standards to express our understanding of the load bearing of the table. The lines on the weights are designed with respect to the golden ratio, thus the top and bottom components are firm and secure. The series of weights also have symmetrical upper and lower end-tables, with the upper one removable to serve dual functions of storage and flower arrangement.

Side Table
KT8508N64TEK
Φ33.6x51 cm
Aluminum/Teak



Frame : Olive
Top : Teak



Frame : Black Mat
Top : Teak



Frame : Olive Grey
Top : Teak

Side Table
KT8602C64ALU
Φ45x52 cm
Aluminum



Frame : Terra Cotta
Top : Terra Cotta



Frame : Black Mat
Top : Black Mat



Frame : Olive
Top : Olive

Dining Table
KT8602C27CER
Φ75x75 cm
Aluminum/Ceramic



Frame : Olive
Top : Jenny Grey



Frame : Orange
Top : Jenny Grey



Frame : Black Mat
Top : Dark Grey

Dining Table
AM9028N47TEK
KB8602C37ALU
Φ75x75 cm
Aluminum/Teak



Frame : Olive
Top : Teak



Frame : Black Mat
Top : Teak



Frame : White Mat
Top : Teak

Dining Table
KT8602C27CER
Φ100/120x75 cm
Aluminum/Ceramic



Frame : Olive Grey
Top : Jenny Grey



Frame : Black Mat
Top : Sharo Blue

Dining Table
KM8602N46TEK
KB8602C37ALU
Φ100x100x75 cm
Aluminum/Ceramic



Frame : Sand
Top : Teak

Dining Table
KM8602N46CER
KB8602C37ALU
Φ100x100x75 cm
Aluminum/Ceramic



Frame : Sand
Top : Travertino Roman

FRAME:



Black Mat
(13569A)



Olive Grey
(1215966)



White Mat
(1200371)



Sand
(70108)



Terra Cotta
(14797A)



Orange
(1219624)

TOP:



Sharo Blue



Dark Grey



Jenny Grey



Teak



Travertino Roman

BERGEN

Bergen table series includes side table, dining table, bar table etc., which is composed by the simple geometric elements and pillars. The radians and details express the smooth rounded characteristics. The table top and bottom can be changed for a variety of colors, and the pillar can be solid color or wooden look by heat transfer process.

Dining Table
Φ70x75 cm
Aluminum/Ceramic/Teak



AM9028N47CER
AB0607N37ALU
Frame : Black Mat
Top : Jenny Grey



AM9003N47TEK
AB0607N37ALU
Frame : Juniper Green
Top : Teak



AM9004A47ALU
AB0607N37ALU
Frame : Terra Cotta
Top : Terra Cotta



Side Table
Φ45x68cm
Aluminum/Ceramic



AT0608N64CER
Frame : Black Mat
Top : Snow White



Dining Table
W140xD70xH75cm
Aluminum/Ceramic/Teak



AM9028N45CER
AB0607N37ALU
Frame : Black Mat
Top : Jenny Grey



Dining Table
W70xD70xH75cm
Aluminum/Ceramic/Teak



AM9028N46CER
AB0607N38ALU
Frame : Black Mat
Top : Jenny Grey



AM9003N46TEK
AB0607N38ALU
Frame : Juniper Green
Top : Teak



KM8511N46ALU
AB0607N38ALU
Frame : Terra Cotta
Top : Terra Cotta



FRAME:



Black Mat
(13569A)



Juniper Green
(14940A)



Terra Cotta
(14797A)

TOP:



Jenny Grey



Snow White



Teak

Bar Table
Φ60x105cm
Aluminum/Ceramic



AM9028N47CER
AB0607N37ALU
Frame : Black Mat
Top : Jenny Grey



AM9004A47ALU
AB0607N37ALU
Frame : Terra Cotta
Top : Terra Cotta



Side Table
Φ45x48 cm
Aluminum



KT8512N64ALU
Frame : Juniper Green
Top : Jenny Grey



LOTUS

The petal design of its central pillar bestows the Lotus with understated elegance. Select from a range of nature-inspired colours that will allow the series, which includes both tables and vases, to easily integrate into various indoor and outdoor décor.

Dining Table
KT8602N27CER
Φ90x75 cm
Aluminum/Ceramic



Frame : Juniper Green
Top : Jenny Grey



Frame : Olive Grey
Top : Jenny Grey

Bar Table
KT8602N29CER
Φ80x108 cm
Aluminum/Ceramic



Frame : Olive Grey
Top : Jenny Grey

Dining Table
KT8602N27CER
W220xD100xH75 cm
W160xD80xH75 cm
Aluminum/Ceramic



Frame : Juniper Green
Top : Jenny Grey



Frame : Olive Grey
Top : Jenny Grey

Dining Table
KT8602F27CER
W240xD118xH75 cm
Aluminum/Ceramic



Frame : Sandstone
Top : Snow White

Coffee Table
KT8602N63CER
Φ80x34 cm
Aluminum/Ceramic



Frame : Juniper Green
Top : Jenny Grey

Side Table
KT8602N64TEK
Φ48x54 cm
Aluminum/Teak



Frame : Silver Grey
Top : Teak



Frame : Olive
Top : Teak

Coffee Table
KT8602H63CER
W120xD71.5xH35 cm
Aluminum/Teak



Frame : Sand
Top : Travertino Roman

Coffee Table
KT8602H63HPL
W95xD61xH43 cm
Aluminum/Teak



Frame : Sand
Top : Teak

FRAME:



Olive Grey
(1215966)



Silver Grey
(93328AC)



Juniper Green
(14940A)



Olive
(1219626)



Black Mat
(13569A)



Sandstone
(48381H)



Sand
(70108)

TOP:



Jenny Grey



Teak



calacata gold



Travertino Roman

PIPE BARCART

Derived from the PIPE double deck coffee table, the bar cart has been designed in full consideration of its usage and movement. It has a stable structure that is easily maneuvered around. Minimalistic and modern, the design of the PIPE bar cart can be well integrated into the outdoor environment.

Bar Cart
KT8503N42ALU
W63xD95xH92 cm
Aluminium/Teaklook
Knocked-Down



Frame : Olive Grey



Frame : Olive



FRAME:



Olive
(1219626)



Olive Grey
(1215966)

LOTUS PLANTER

The Lotus planter continues to express the family character of the series, with the central column shaped like a petal and a continuous combination of one petal to another. The overall flowerpot upper matches the rhythmic base of the petals below, achieving a more aesthetically pleasing ratio. This series is more suitable for home use with four reasonable sizes to meet your different plant needs.

Planter(L)
KH8602A51ALU
Φ40x42 cm
Aluminum



Frame : Olive
Frame : Anthracite



Frame : Olive Grey

Planter(XL)
KH8602A51ALU
Φ50x53 cm
Aluminum



Frame : Olive
Frame : Anthracite



Frame : Olive Grey

Planter(H)
KH8602B51ALU
Φ40x52 cm
Aluminum



Frame : Olive



Frame : Orange



Frame : Olive Grey

Planter
KH8602N51ALU
Φ65x45 cm
Aluminum/Teaklook



Frame : Juniper Green
Top : Teaklook

Planter
KH8602N51ALU
Φ65x83 cm
Aluminum/Teaklook



Frame : Silver Grey
Top : Teaklook

FRAME:



Anthracite
(72412)



Olive Grey
(1215966)



Silver Grey
(93328AC)



Olive
(1219626)



Juniper Green
(14940A)



Orange
(1219624)

TOP:



Teak

ROOT PLANTER

Root flowerpot refines the "rooted" state of wild plants, and expresses full vitality with abstract design language. It consists of an ellipse. It consists of a tub and a bracket, which can be split up and down. The unique "V-shaped" structure creates a feeling of strength sprouting upward. Among them, the tube basin. The prototype is taken from the vessels of the North African tribes, which is round and simple; The three feet at the bottom are as light and stable as the root system of a plant that goes deep into the soil. Solid. This bracket is not only convenient to move, but also improves the air permeability of the flowerpot, which is beneficial to daily planting. Color matching of Root flowerpot comes from. In the Gobi and oasis of nature, the fine sand-like spray texture presents matte texture. Can satisfy people. Demand for different plants can be used outdoors or at home.

Planter
KH8513N51ALU
Φ44*65 cm
Aluminum



Frame : Olive
Frame : Taupe



Frame : Black Mat

Planter
KH8513N51ALU
Φ57x79 cm
Aluminum



Frame : Olive
Frame : Taupe



Frame : Black Mat

FRAME:



Black Mat
(13569A)



Taupe
(72522)



Olive
(1219626)

LANTERN

The inspiration of Lantern series comes from the combination of oriental aesthetics and modern design. Lantern series is about "light", the lamp absorbs the configuration elements and special style from the traditional Chinese lantern and hand-basket. It retains the elegant "handle" design on the top, which can be easily carried and moved at will. For this hand lamp, it adds a small round bottom, which you can display plant, flower, decoration pieces to build the cozy atmosphere, delightfully fresh nature.

Hand Lamp
KH8510N117ALU
W14.7xD13.8xH26.5 cm
Aluminum/LED



Frame : Orange



Frame : Olive



Frame : Olive Grey



Frame : Black Mat

Hand Lamp
KH8510N117ALU
W16xD16.6xH42 cm
Aluminum/LED



Frame : Orange



Frame : Olive



Frame : Olive Grey

Floor Lamp(L)
KH8510A117ALU
W33xD33xH180 cm
Aluminum/LED
Knocked-Down



Frame : Black Mat



Frame : Olive

Floor Lamp(XL)
KH8510B117ALU
W45xD159xH200 cm
Aluminum/LED
Knocked-Down



Frame : Orange



Frame : Black Mat

Hand Lamp
KH8510C117ALU
Φ22*25 cm
Aluminum/LED



Frame : Black Mat

Hand Lamp
KH8510C117ALU
Φ22*42 cm
Aluminum/LED



Frame : Black Mat

FRAME:



Black Mat
(13569A)



Olive Grey
(1215966)



Olive
(1219626)



Orange
(1219624)

LOTUS OUTDOOR FUNCTION ISLAND

The design inspiration for the Lotus series comes from the extraction and expression of the shape of petals. The whole series takes the central petal column as the 'family trait', with petals repeatedly stacked and fixed, expressing a sense of rhythm. Lotus Outdoor Function Island is designed for the outdoor kitchen scene and combines storage, a mini fridge, a sink, a built-in ice bucket, lighting, and more. With the special arc-type column as a support, this function island expresses an elegant, unique temperament.

AKC001001
W79.6xD79.6xH102 cm
Aluminum/Ceramic



Frame : Black Mat
Top : Jenny Grey

AKC002001
W141.5xD79.6xH102 cm
Aluminum/Ceramic



Frame : Black Mat
Top : Jenny Grey

B3C282+B3C283
W180.5xD79.6xH102 cm
Aluminum/Ceramic



Frame : Black Mat
Top : Jenny Grey

B3C284+B3C285
W180.5xD79.6xH75 cm
Aluminum/Ceramic



Frame : Black Mat
Top : Jenny Grey

FRAME:



White Mat
(1200371)



Black Mat
(13569A)



Sandstone
(48381H)



Olive
(1219626)

TOP:



calacata gold



Jenny Grey



sharo blue

ISLAND

AKA001001
W259xD62xH86 cm
Aluminum/Ceramic



Frame : White Mat
Top : light grey

AKB001001
W259xD62xH102 cm
Aluminum/Ceramic



Frame : White Mat
Top : light grey

FRAME:



White Mat
(1200371)



Black Mat
(13569A)

TOP:



calacata gold



Jenny Grey



sharo blue

PAVILION

Pavilion is designed to naturally extend indoor life to the outdoors with an architectural style. It is a 'continuation of the house', emphasizing a non-temporality, and encouraging normalization of enjoying the outdoors. The entire pavilion is based on a standard module structure with a narrow eaves design. Through the selection of electric shutters, rolling curtains, folding glass doors, grids and other elements, it can create a special outdoor space with different forms. Pavilion includes terracotta, olive green, black, and white styles, presenting a more youthful, smart, thoughtful, and diverse outdoor lifestyle.



Pavilion
AP6500
W300xD400xH270 cm
W300xD300xH270 cm
Aluminium

Frame : Olive



Pavilion
AP6500
W300xD300xH270 cm
Aluminium

Frame :Black Mat



Pavilion
AP6501N136ALU+AKG002008
330*268*270cm
WITHOUT EAVES

530*368*270cm
WITH EAVES

Frame : Sand



Pavilion
AP6500
W300xD400xH270 cm
Aluminium

Frame : Black Mat



Pavilion
AP6301N135ALU
AKG001000
W368xD268xH270 cm
Aluminium

Frame : White Mat



Pavilion
AP6500
W300xD300xH270 cm
Aluminium

Frame : Sandstone



Pavilion
AP6400N149ALU
W399xD244xH244 cm
Aluminium

Frame : White Mat

FRAME:



Black Mat
(13569A)



White Mat
(1200371)



Olive
(1219626)



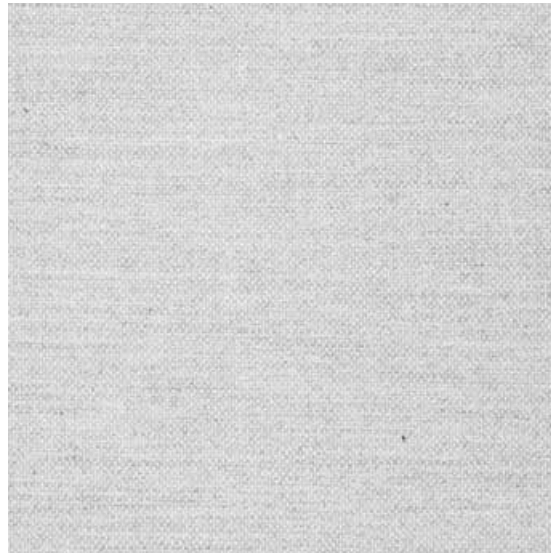
Sandstone
(48381H)



Sand
(70108)

FABRIC

100% SOLUTION DYED ACRYLIC FABRIC



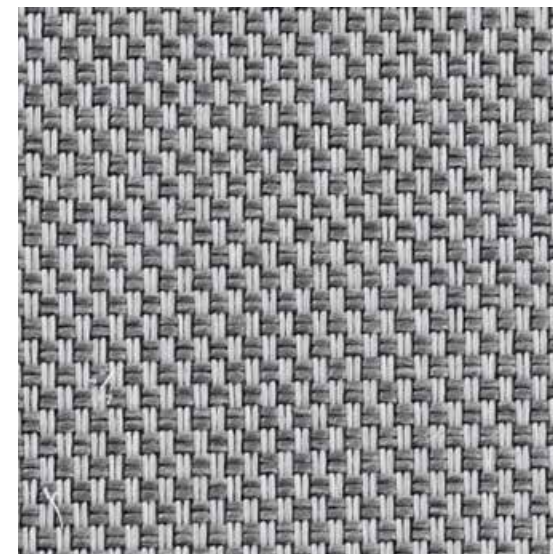
LIGHT GREY(SEF4002)

WATER AND STAIN REPELLENT/RESISTANT TO UV RAYS



FABRIC

100% POLYPROPYLENE



VITA GRIS 51

WATER AND STAIN REPELLENT/RESISTANT TO UV RAYS



FABRIC

100% POLYPROPYLENE



FONTELINA 180

WATER AND STAIN REPELLENT/RESISTANT TO UV RAYS



FABRIC

100% SOLUTION DYED ACRYLIC FABRIC



CANVAS (5453)

WATER AND STAIN REPELLENT/RESISTANT TO UV RAYS



ROPE

POLYPROPYLENE



GRASS GREEN(HF-008)

WATER AND STAIN REPELLENT/RESISTANT TO UV RAYS



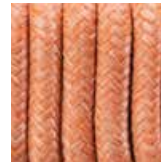
LIGHTGRAY(HF-44219)



DARK GREY(HF-010)



GRASS GREEN(HF-008)



ORANGE (HF-023)

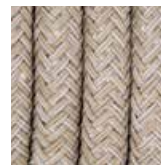
ROPE

100% PVC

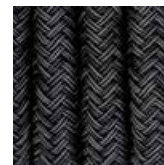


SAND(HF-006)

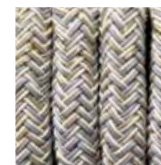
WATER AND STAIN REPELLENT/RESISTANT TO UV RAYS



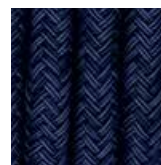
SAND(HF-006)



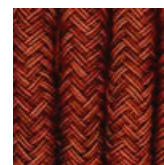
CARBON(HF-009)



APRICOT(HF-021)



NAVY BLUE(HF-008)



NACARAT(HF-036)

ROPE for LOOP collection

100% PVC



HONEY (HF-021)

WATER AND STAIN REPELLENT/RESISTANT TO UV RAYS



LIGHT GREY(44219)



HONEY (HF-021)

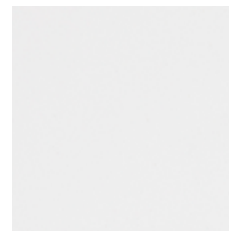


CARBON (HF-009)

KUNDESIGN Rope is a weaved Selected PP fibre. The material has a soft surface that acts like a fabric. Avoid pulling/pushing the material too hard as this may cause it to lose its shape. This weatherproof material withstands changing weather conditions, is UV-resistant which makes it ideal for outdoor use. It is easy to maintain and can be cleaned with ordinary household cleaners.

FRAME

ALL OUR ALUMINIUM FURNITURE IS POWDER COATED



WHITE MAT(1200371)



SAND(70108)



NUTMEG(491098HS)



OLIVE GREY(1215966)



SILVER GREY(93328AC)



CURCUM(1216034)



ORANGE(1219624)



SANDSTONE(48381H)



RED OCHER(680-48431H)



TERRA COTTA(14797A)



OLIVE(1219626)



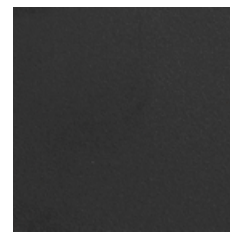
JUNIPER GREEN(14940A)



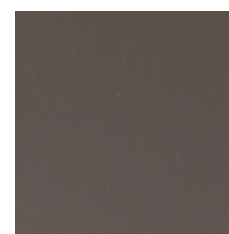
VIVID BLUE(14995A)



MIDNIGHT BLUE(1219623)



BLACK MAT(13569A)



TAUPE(72522)

Powder coating serves as a protective layer that is tinted in a variety of colours. Aluminium furniture is ideal for use outdoors as well as indoors.

TOP

CERAMIC



CALACATA GOLD



TRAVERTINO ROMAN



JENNY GREY



HOWARD

TOP

CERAMIC



JK-11



JK-4

TOP

WOOD



TEAK



CRANK FURNITURE
THE IONIAN OUTDOOR COLLECTION

CRANK.

www.crankfurniture.com.au

crank@crankfurniture.com.au

t: 1300 852 425

studio 8/8-20 queen street, revesby nsw 2212

by appointment